



VISTAPOOL CONTROL SYSTEM INSTALLATION GUIDE

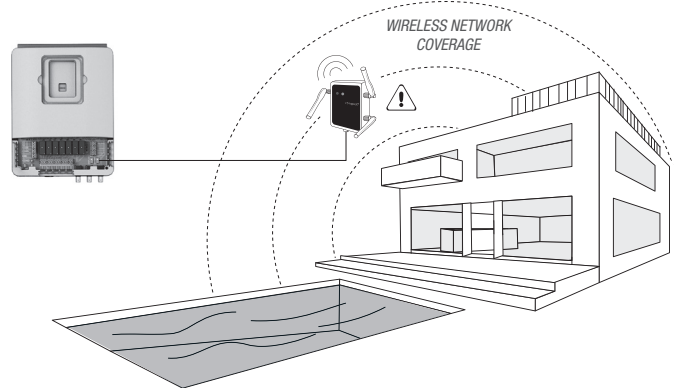
v!stapool
domotic touch screens
for swimmingpools

1 INTRODUCTION

Our remote control modules allow connection to all our equipment via Internet.
The client monitors, controls and adjusts all his pool components and parameters from anywhere in the world.
The pool maintenance professional controls all his pools without having to visit them.
The pool automatically generates statistics about the history of its parameters.



The WIFI Module must be within the scope of coverage of the wireless network that will be connected.



2 WIFI MODULE CONFIGURATION

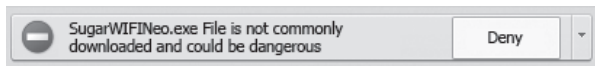
2.1 WIFI MODULE CONNECTION TO THE COMPUTER

Connect the WIFI module using the supplied USB cable to a computer with Windows 7 (or higher) and connected to the Internet (figure A). Currently, it is not necessary that the WIFI Module is connected to the system electronic box.

Enter the Vistapool website (www.vistapool.es) and the screen B will appear.

Press in the "New user" link at the bottom of the page. The screen C will appear, select the flashlight icon and download the "WIFI Configuration Software" (you don't have to fill in the form to download it).

Some web browsers or anti virus devices may prevent this download to be opened automatically.



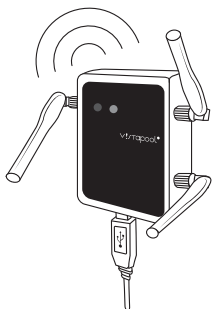
If that happens, just accept the download by explicitly telling the browser to save the file:



The downloaded file is a compressed ZIP archive. Open the archive and move its content into the desktop or other directory of your choice.

Open the executable file (EXE) and the screen "Vistapool WIFI-RF configuration tool" will appear (screen D). If the word "Connected", appears on the bottom left of the window, the WIFI module is properly connected to the computer. Follow the instructions to complete the configuration of the module.

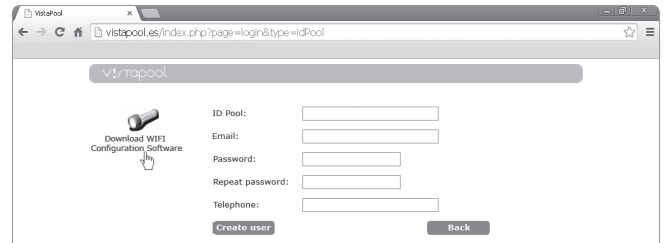
A



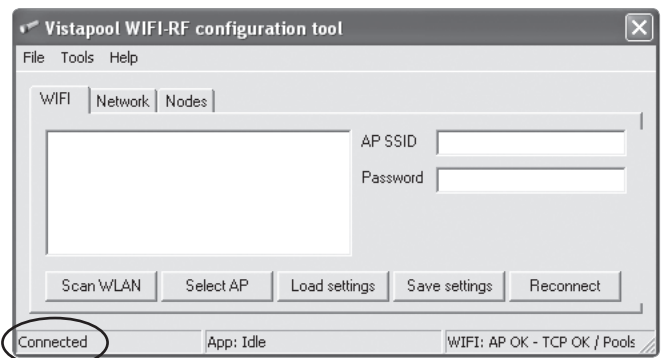
B



C



D



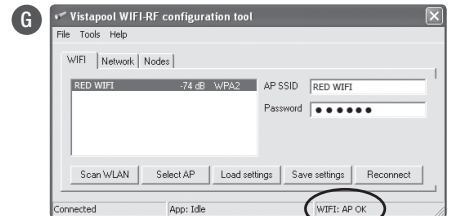
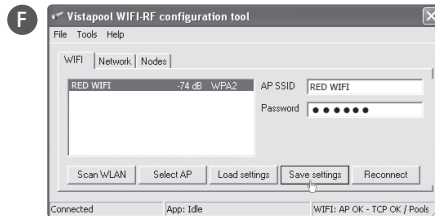
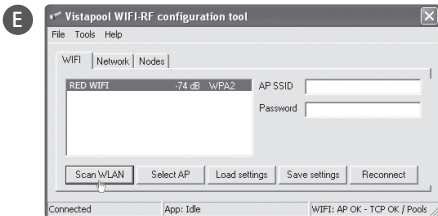
2 WIFI MODULE CONFIGURATION

2.2 CONFIGURATION ACCESS TO THE WIRELESS NETWORK

Press the button “Scan WLAN” to search your wireless access point. Wait some seconds for this action to be completed. The results will be shown in the WIFI tab (screen E).

Select your access point and press the button “Select AP”. Your Access Point SSID (name of your wireless network) will be shown in the “AP SSID” box. Now enter the WIFI network password in the “Password” box and press “Save Settings” to save the settings (screen F).

If both the access point and the password are properly configured, the WIFI Module will automatically connect to the access point and the status “WIFI: AP OK”, will appear at the bottom right of the window as shown on screen G.



WIFI NETWORK REQUIREMENTS AND RECOMMENDATIONS

If you have trouble with your WIFI network configuration, read carefully the text below.

DHCP AUTOMATIC IP ASSIGNMENT

The DSL router has to be configured to enable this service for new connections. The WIFI module uses this protocol to automatically obtain an IP address from the router. If you have experienced problems with your WIFI Module configuration and the box does not automatically connect to the router, check if DHCP is enabled. To do so, enter the router web address with a web browser (it is usually 192.168.1.1 or 192.168.0.1) and gain access to the control panel by setting the user and password required by the router. Enter the DHCP option and enable it. Finally save and apply the configuration change to let the router work with the new configuration.

WIFI ENCRYPTION

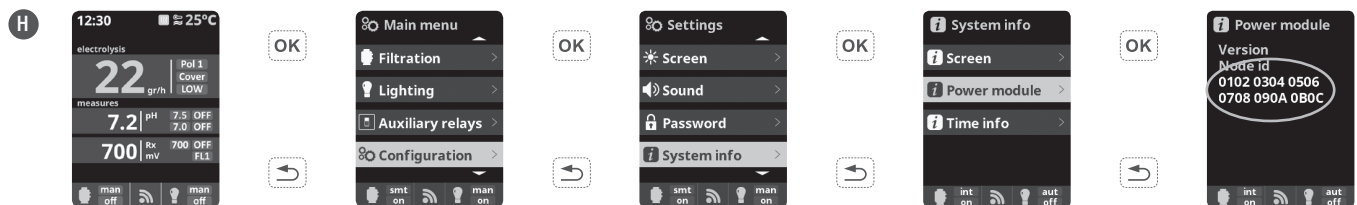
Swimming pool water filtering is a very delicate operation, and its control must have a certain degree of protection against unwanted access and even malicious intrusions. Therefore it is strongly recommended to use a strong encryption protocol when installing a swimming pool connection using the WIFI network. Several tests and documents have shown that WEP encryption have some security flaws and therefore should be replaced it with WPA encryption protocol. Nevertheless, many homes and companies still uses WEP encryption. If you have WEP as encryption protocol, change it by connecting to the router control panel, as explained in the previous section. Then enter “Wireless settings” and change the WEP encryption to WPA. You can always use the same password as in the WEP encryption. Always remember to erase and create again your wireless network connection on your PC. WIFI supported encryption protocols are: Open (not recommended, but available for public places. Use in read mode only); WPA-Personal (AES); WPA-Personal (TKIP+AES); WPA2-Personal (AES); WPA2-Personal (TKIP+AES).

3 REGISTERING INTO VISTAPOOL

3.1 OBTAINING THE ID POOL

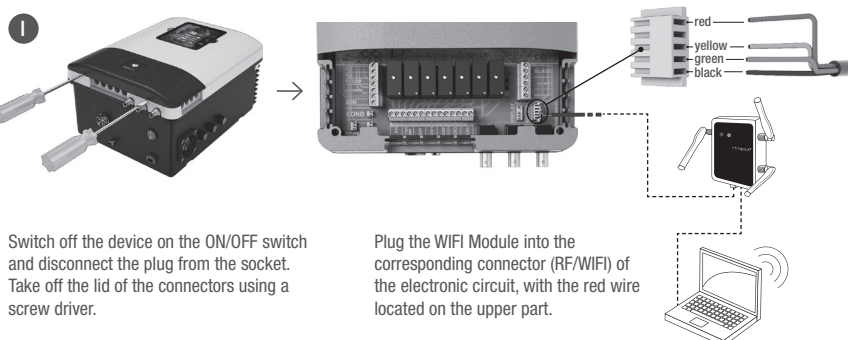
Once the WIFI module is correctly connected to the wireless network, it's time to register into the Vistapool website. Therefore, the identity number of the pool (ID Pool) is needed. There are two ways to get this number:

A. Accessing the screen “Power Module” in equipment’s TFT display (figure H). Write down the “ID Pool” number.



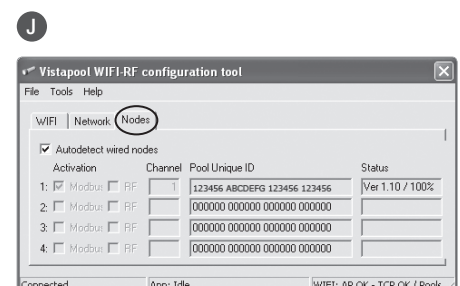
B. Plugging by cable the WIFI Module to the electronic box using the RF/WIF communication port (figure I). If the WIFI Module is properly connected, the S1 LED will turn blue and the S2 LED will flash in green.

If the connection described in Figure G is properly performed, the “Pool ID” will automatically appear on the “Nodes” tab in the “Vistapool WIFI-RF configuration tool” software, previously installed on your computer (screen J). Copy the Pool ID into the clipboard of your PC.



Switch off the device on the ON/OFF switch and disconnect the plug from the socket. Take off the lid of the connectors using a screw driver.

Plug the WIFI Module into the corresponding connector (RF/WIFI) of the electronic circuit, with the red wire located on the upper part.



3 REGISTERING INTO VISTAPPOOL

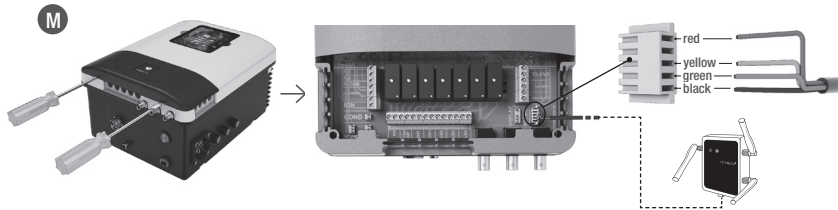
3.2 REGISTERING INTO VISTAPPOOL WEBSITE

After obtaining the "Pool ID", go to the Vistapool website (www.vistapool.es) and press "New user" (screen K).

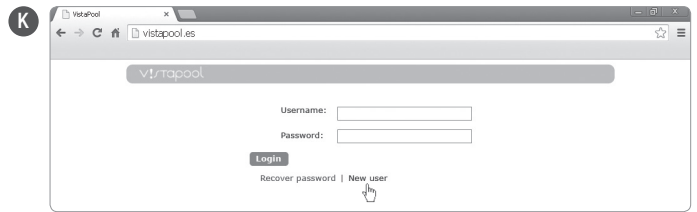
The screen L will appear. Fill in the form using the "ID Pool" number and your personal data. Then press "Create User". If you have properly written all form fields, a pop-up message will appear indicating that the user has been created successfully.

3.3 CONNECT WIFI MODULE TO ELECTRONIC BOX

From now to access the functions in Vistapool system it's necessary to connect by cable the WIFI Module to the electronic box (figure M). There is no need to have it connected to the computer, but must be within the scope of coverage of the wireless network to which it is registered.



- Switch off the device on the ON/OFF switch and disconnect the plug from the socket.
- Take off the lid of the connectors using a screw driver.
- Plug the WIFI Module into the corresponding connector (RF/WIFI) of the electronic circuit, with the red wire located on the upper part.
- If the WIFI Module is properly connected, the S1 LED will turn blue and the S2 LED will flash in green.



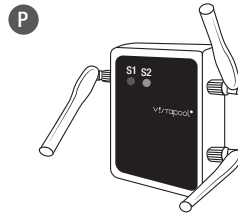
4 VISTAPPOOL WEBSITE OPERATION

If the WIFI module is properly connected to the electronic box, return to the computer, access the Vistapool website (www.vistapool.es), enter the user name and password and click "Login" (screen N).

If the swimming pool is properly communicating with the Vistapool central server, the screen O will be shown. If there is no communication with Vistapool system, check the internet connection and network preferences (see chapter 2). The colors of the LED's also show the connection status of the WIFI module (figure P).

If you want to change any parameters of your swimming pool, click on the gear icon located on the left. The adjustment menu will appear (screen Q). This screen depends on the type of pool control that is installed in your system. Choose the type of parameters that you want to adjust by pressing the desired button. For example, if you want to turn on or off the filtration, press the "Filtration" button. The next screen shows all available options related to the selected parameter, as seen in the screen R.

It is possible to add more swimming pools, change the password or the language of the Vistapool interface by pressing the Profile button in the top toolbar (screen S).



LED S1:

- Blue** - WIFI module connected with the wireless network.
- Red** - No connection with the wireless network.
- Green** - WIFI module connected with the wireless network, but not with the pool.
- Yellow** - If LED is lighted permanently in this color, the WIFI module is broken.

LED S2:

- Flashing green** - WIFI module connected with the wireless network.
- Flashing red** - No connection with the Vistapool server.

